

A woman in a black and white maid dress stands on the steps of a brick building entrance. She is wearing a black velvet cape with a white lace collar and a large white bow at the neck. Her skirt is black with a wide white lace-trimmed apron. She has a white floral headpiece. The building behind her has a red brick facade with ornate grey stone arches and columns. A black flag is visible on the right side of the building.

le livre

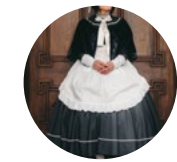
by milky ange

6 STYLES OF MAID DRESSES FOR
EVERY THEME, SITUATION, AND OCCASION

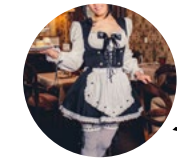


Clariss Long by milky ange

Outfit Design © 2019 Kijishiro Corp
Character Illustration © 2019 Shiho Sakura



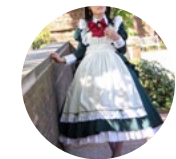
Classic Style Maid
Clariss



Cafe Style Maid
Kirsten



Romantic Style Maid
Renee



Classic Style Maid
Rita



Tyrolean Style Maid
Fenella



Romantic Style Maid
Florianne

• MILKY ANGE •



• UNOFFICIAL FANBOOK •



milky ange

100% Original Maid Dress & Lolita Fashion



CLARIS LONG

CLASSIC STYLE MAID DRESS

BLACK | ICY BLUE



A classical style maid dress with shoulder frill and yoke. Shoulder yoke features pin tuck and lace. Lace details are also added to the stand collar and cuffs to further emphasize the classical look. Comes with pinned deep red bow tie with tulle lace.

CLASSIC STYLE MAID CLARIS LONG

Black
AC-0265 (S) ¥28,080
AC-0266 (ML) ¥30,240
AC-0267 (XL) ¥32,400

HEADBAND 04
AC-0052 ¥3,780

CAPE VIVI
AC-0400 (S-ML) ¥19,440
AC-0401 (XL-XXL) ¥21,600

LACE TRIMMED PANNIER WITH 3 STEEL HOOPS
AC-0156 ¥14,040

DRAWER TINA
AL-0223 ¥10,800

LEGGWEAR 05
(White lace top thigh high stockings)
AC-0353 ¥4,320



CLARIS LONG

CLASSIC STYLE MAID DRESS

BLACK | ICY BLUE



Set Includes

- Maid dress, apron, and removable bow tie.

Details

- Waistline seam.
- Invisible back zip fastening with hook.
- Shoulder yoke with pin tuck and decorative buttons.
- Shoulder frill (non-detachable).
- Laced sides for adjusting the dress fit.
- Stand collar.
- Invisible sleeve zip fastening.
- Fully lined.
- Our model is 172 cm and wears a size ML.

Care & Fabric

- Polyester, cotton, cotton lace, tulle lace, satin ribbon, polyester (lining)
- Dry clean only.

Recommended Accessories

- Headband 04 (AC-0052)
- Cape Vivi (AC-0400,401)
- Lace Trimmed Pannier with 3 Steel Hoops (AC-0156)
- Drawer Tina (AL-0223)
- Legwear 05 (AC-0353)

SKU	AC-0265	AC-0266	AC-0267
Size	S	ML	XL
Bust (max)	82 cm	96 cm	110 cm
Waist (max)	66 cm	80 cm	95 cm
Shoulder Width	35 cm	37 cm	42 cm
Neck Round	37 cm	39 cm	43 cm
Arm Girth	26 cm	29 cm	34 cm
Sleeve Length	62 cm	64 cm	66 cm
Waist to Hem	88 cm	92 cm	92 cm
Dress Length	123 cm	129 cm	131 cm
Apron Waist (min)	58 cm	64 cm	75 cm
Apron Length	65 cm	65 cm	65 cm
Price	¥28,080	¥30,240	¥32,400





KIRSTEN

CAFÉ STYLE MAID DRESS

BLACK | DEEP BLUE



Kirsten is a chic maid dress with a wide neckline. Smocked blouse with pin tuck peasant puff sleeves have a soft feminine silhouette, and lace details added to the apron and collar (not shown) completes the classical look. Wide-open vest with curvy outline and shirred back is comfortable to wear while enhancing your silhouette.

CAFE STYLE MAID KIRSTEN

(model shown without collar)

AC-0171 (S) ¥32,400

AC-0172 (ML) ¥34,560

AC-0173 (XL) ¥37,800

HEADBAND 04

AC-0052 ¥3,780

LACE TRIMMED PANNIER (WHITE)

AC-0144 ¥12,960

LEGWEAR 05

(White lace top thigh high stockings)

AC-0353 ¥4,320



KIRSTEN

CAFÉ STYLE MAID DRESS

BLACK | DEEP BLUE



Set Includes

- Blouse, skirt, apron, vest, collar (not shown in photos), ribbon with fake pearl, and headband (not shown in photos; photos use headband 04 which is sold separately)

Details

- Shirred back smocked blouse with pin tuck peasant puff sleeves.
- Elastic waist skirt.
- Laced front vest with shirred back, side fastener, and a back ribbon.
- Detachable front ribbon with fake pearl.
- Detachable apron attached with snap button.
- Our model is 172 cm and wears a size ML.

Care & Fabric

- Polyester twill, cotton, sateen ribbon, torsion lace, cotton lace, Rachel lace, polyester taffeta (lining).
- Dry clean recommended. Collar, blouse, and apron may be hand washed.

Recommended Accessories

- Headband 04 (AC-0052)
- White Lace Trim Pannier (White) (AC-0144)
- Legwear 05 (AC-0353)

SKU	AC-0171	AC-0172	AC-0173
Size	S	ML	XL
Vest Bust (min)	76 cm	86 cm	100 cm
Vest Waist (min)	58 cm	70 cm	80 cm
Vest Shoulder	35 cm	36 cm	40 cm
Blouse Bust (max)	140 cm	140 cm	155 cm
Blouse Length	53 cm	53 cm	57 cm
Around the Cuffs	40 cm	40 cm	40 cm
Sleeve Length	63 cm	63 cm	63 cm
Blouse Shoulder	35 cm	35 cm	35 cm
Neck Round	37 cm	39 cm	43 cm
Skirt Waist (max)	110 cm	110 cm	110 cm
Skirt Length	36 cm	36 cm	36 cm
Price	¥32,400	¥34,560	¥37,800



RENEE

ROMANTIC STYLE MAID DRESS

BLACK



Renee is a maid dress designed with antique dolls in mind. It features a dressy apron with a deep circular neckline and a cute headband with lace drapings. Detachable collar and apron are fully decorated with torsion lace and frills for a very sweet look. Combine them with a simple black dress, and the result is a perfectly cute antique doll look.



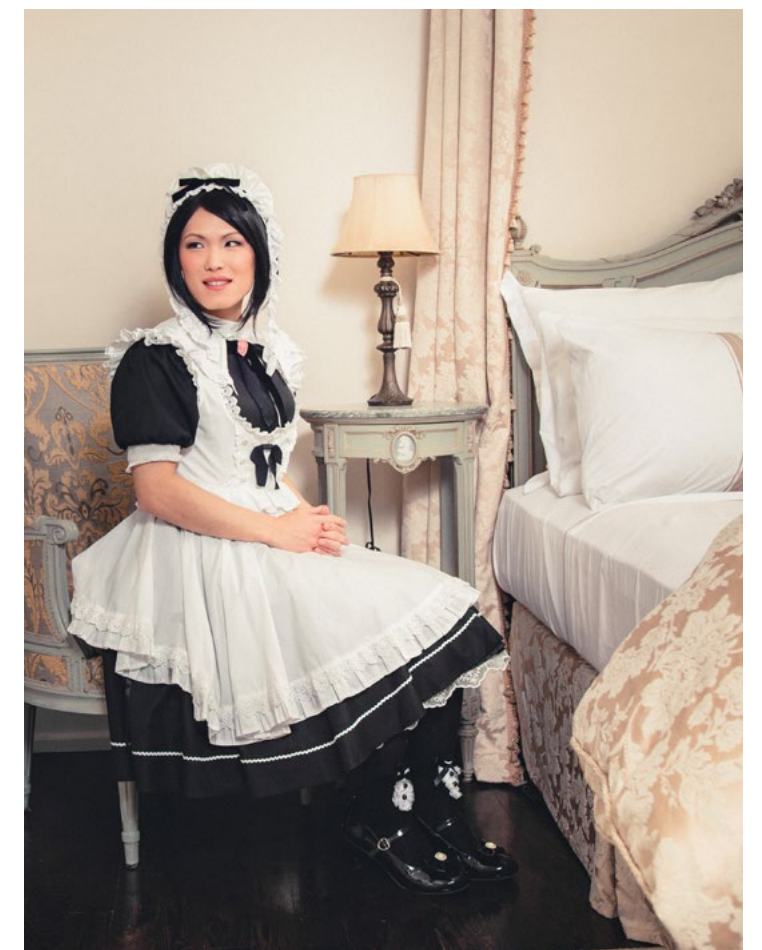
ROMANTIC STYLE MAID RENEE

AC-0297 (S) ¥31,500
AC-0298 (ML) ¥33,600
AC-0299 (XL) ¥36,700

LACE TRIMMED MIDI PANNIER
AC-0303 ¥10,800

LEGGWEAR 10
(Black lace top thigh high stockings)
AC-0354 ¥4,320

LEGGWEAR 14
(Black socks with lace details)
AC-0200 ¥2,730



RENEE

ROMANTIC STYLE MAID DRESS

BLACK



Set Includes

- Maid dress, apron, collar, rose ribbon, apron ribbon, headband, and headband ribbon.

Details

- **Unlike the photos, actual dress has LONG sleeves with invisible zip fastening.**
- Waistline seam with knee length skirt.
- Invisible back zip fastening with hook.
- Laced sides for adjusting the dress fit.
- Stand collar.
- Decorative buttons on the chest and cuffs.
- Fully lined.
- Our model is 172 cm and wears a size ML.

Care & Fabric

- Polyester, torsion lace, cotton, tulle lace, sateen ribbon, velvet ribbon, Grosgrain ribbon, polyester taffeta (lining). Headband: plastic comb, cotton, cotton lace, torsion lace, velvet ribbon (removable).
- Dry clean recommended. Collar and apron may be hand washed.

Recommended Accessories

- Lace Trimmed Midi Pannier (AC-0303)
- Legwear 10 (AC-0354)
- Legwear 14 (AC-0200)

SKU	AC-0297	AC-0298	AC-0299
Size	S	ML	XL
Bust (max)	82 cm	96 cm	110 cm
Waist (max)	66 cm	80 cm	95 cm
Shoulder Width	35 cm	37 cm	42 cm
Neck Round	37 cm	39 cm	42 cm
Arm Girth	26 cm	30 cm	34 cm
Sleeve Length	58 cm	60 cm	62 cm
Waist to Hem	58 cm	60 cm	60 cm
Dress Length	95 cm	99 cm	102 cm
Apron (from Waist)	49 cm	51 cm	51 cm
Price	¥31,500	¥33,600	¥36,700



RITA

CLASSIC STYLE MAID DRESS

DARK BROWN | MOSS GREEN



Voted as the most popular classical style maid dress by our customers, Rita is designed with traditional maid dresses from the Victorian era in mind. It features a frilled bustle made of the same fabric as the dress. The dress can be worn with an apron as a very classical maid dress, or without the apron as a classy long bustle dress.





CLASSIC STYLE MAID RITA

- Moss Green
- AC-0390 (S) ¥32,400
- AC-0391 (ML) ¥34,560
- AC-0392 (XL) ¥36,720
- AC-0393 (XXL) ¥38,880
- HEADBAND 01 (LEFT)
- AC-0175 ¥3,240
- HEADBAND 04 (RIGHT)
- AC-0052 ¥3,780
- RIBBON 01
- AC-0101 ¥2,700
- LACE TRIMMED PANNIER WITH 3 STEEL HOOPS
- AC-0156 ¥14,040
- DRAWER (UNDERGARMENT) TINA
- AL-0223 ¥10,800
- LEGGWEAR 05
- (White lace top thigh high stockings)
- AC-0353 ¥4,320

RITA

CLASSIC STYLE MAID DRESS

DARK BROWN | MOSS GREEN



Set Includes

- Maid dress, bustle, apron, front black ribbon (different from photos), collar, cuffs.

Details

- Waistline seam.
- Invisible back zip fastening with hook.
- Laced sides for adjusting the dress fit.
- Bustle is a part of Cumberbund belt. Belt has elastic back and lace front for adjustment.
- Detachable cuffs with decorative buttons. Cuffs attach to the sleeves with hidden buttons.
- Invisible sleeve zip fastening.
- Fully lined.
- Our model is 172 cm and wears a size ML.

Care & Fabric

- Polyester, cotton, chemical lace, cotton lace, torsion lace, velvet ribbon, polyester (lining)
- Dry cleaning recommended. Hand washable.

Recommended Accessories

- Headband 01 (AC-0175)
- Headband 04 (AC-0052)
- Ribbon 01 (AC-0101)
- Lace Trimmed Pannier with 3 Steel Hoops (AC-0156)
- Drawer Tina (AL-0223)
- Legwear 05 (AC-0353)

SKU	AC-0390	AC-0391	AC-0392	AC-0393
Size	S	ML	XL	XXL
Bust (max)	82 cm	96 cm	110 cm	125 cm
Waist (max)	66 cm	78 cm	95 cm	110 cm
Shoulder Width	35 cm	37 cm	42 cm	47 cm
Neck Round	42 cm	44 cm	46 cm	48 cm
Sleeve Length	64 cm	67 cm	67 cm	69 cm
Dress Length	114 cm	119 cm	125 cm	129 cm
Collar Round	38 cm	40 cm	42 cm	44 cm
Apron Waist (min)	58 cm	64 cm	75 cm	82 cm
Price	¥32,400	¥34,560	¥36,720	¥38,880





FENELLA

TYROLEAN STYLE MAID DRESS

WINE RED | SILVER WHITE | AZURITE BLUE



Fenella is a Tyrolean theme maid dress designed with a cuteness of an antique doll costume in mind. Comes with a sleeveless blouse with plenty of lace in front. As the name "white-shouldered one" suggests, the dress is designed to make you look feminine even with an exposed shoulder. The silky and glossy fabric drapes beautifully for a cute yet classy look.



TYROLEAN STYLE MAID FENELLA

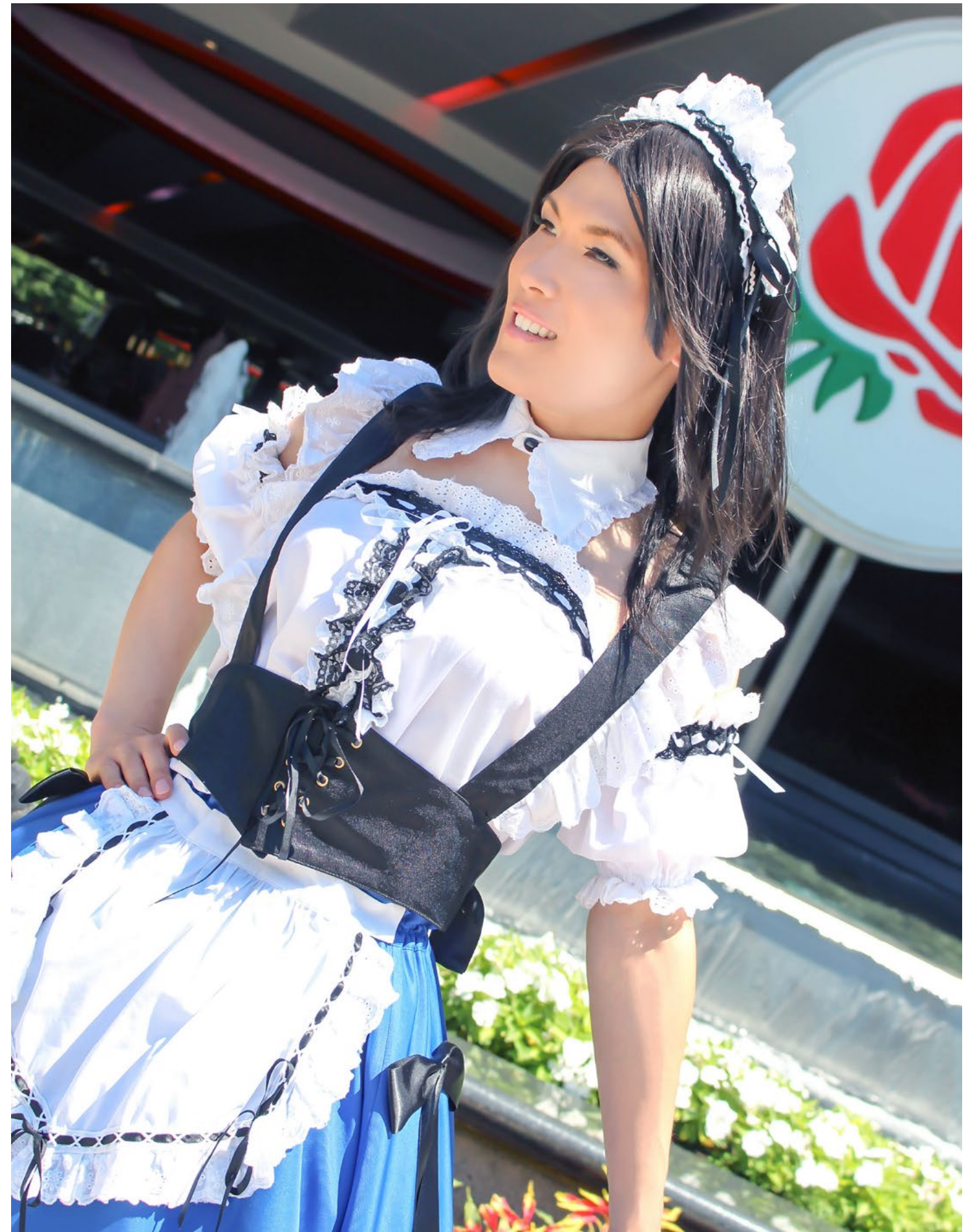
Azurite Blue
AC-0341 ¥32,400

HEADBAND 01
AC-0175 ¥3,240

PETTICOAT FLEUR
AL-0010 ¥8,424

LACE TRIMMED PANNIER (WHITE)
AC-0144 ¥12,960

LEGWEAR 10
(Black lace top thigh high stockings)
AC-0354 ¥4,320





FENELLA

TYROLEAN STYLE MAID DRESS

WINE RED | SILVER WHITE | AZURITE BLUE



Set Includes

- Tube-top sleeveless blouse, detached sleeves, collar, Cumberbund belt, skirt with apron, and 2 pinned ribbons.

Details

- Cumberbund belt can be adjusted with a front lace and rear buttons.
- Tube-top sleeveless blouse and detached sleeves contain elastic rubber for better fit.
- Apron is permanently attached to the skirt.
- Try pinning up the sides of your skirt to a petticoat using pinned ribbons (included) for a classier look.

Care & Fabric

- Polyester twill, cotton, sateen ribbon, Raschel lace, cotton lace, torsion lace, polyester taffeta (lining)
- Dry clean only.

Recommended Accessories

- Headband 01 (AC-0175)
- Petticoat Fleur (AL-0010)
- Lace Trim Pannier (White) (AC-0144)
- Legwear 10 (AC-0354)

SKU	AC-0341
Size	O/S
Bust (max)	108 cm
Blouse Length	50 cm
Skirt Waist (max)	106 cm
Skirt Length	50 cm
Collar Round	39 cm
Price	¥32,400

FLORIANNE

ROMANTIC STYLE MAID DRESS

POWDER PINK | SKY BLUE



Florianne is a spring theme maid high-low dress decorated with plenty of lace and frills for a very detailed and romantic look. Lace on the collar and apron contain rabbit motif, making the dress perfect for the Easter season. Puff sleeves are adorned with tulle and chemical laces as well as decorative golden buttons. The collar is fully decorated with torsion lace. Comes with front and skirt aprons that can be worn together or separately for a varied look.





ROMANTIC STYLE MAID FLORIANNE
 AC-0360 (S) ¥33,480
 AC-0361 (ML) ¥35,640
 AC-0362 (XL) ¥37,800
 AC-0363 (XXL) ¥39,960

HEADBAND 09
 (Rabbit ear headband)
 AC-0103 ¥4,320
 LACE TRIMMED PANNIER (WHITE)
 AC-0144 ¥12,960
 SINGLE HOOP PANNIER
 AC-0348 ¥12,960



FLORIANNE

ROMANTIC STYLE MAID DRESS

POWDER PINK | SKY BLUE



Set Includes

- Maid dress, collar, front apron, skirt apron, and ribbon with rose.

Details

- Long sleeved dress with high-low skirt.
- Invisible back zip fastening with hook.
- Laced sides for adjusting the dress fit.
- Stand collar with lace and a separate removable collar tied in front with a ribbon.
- Shoulder frill.
- Invisible sleeve zip fastening. (Due to thicker garment, fasteners may not glide smoothly where the sleeve meets the cuff. This is by design and not a defect.)
- All buttons are decorative.
- Torsion lace is hand stained and color may vary. This is by design and not a defect.
- Fully lined.
- Our model is 172 cm and wears a size ML.

Care & Fabric

- Polyester twill, cotton, tulle lace, rabbit motif lace, torsion lace, chemical lace, polyester taffeta (lining).
- Dry cleaning recommended. Hand washable.

Recommended Accessories

- Headband 09 (AC-0103)
- Lace Trimmed Pannier (White) (AC-0144)
- Single Hoop Pannier (AC-0348)

SKU	AC-0360	AC-0361	AC-0362	AC-0363
Size	S	ML	XL	XXL
Bust (max)	86 cm	96 cm	110 cm	125 cm
Waist (max)	66 cm	78 cm	95 cm	110 cm
Shoulder Width	35 cm	37 cm	42 cm	47 cm
Neck Round	37 cm	39 cm	41 cm	43 cm
Around the Cuffs	19 cm	21 cm	23 cm	24 cm
Sleeve Length	61 cm	63 cm	63 cm	65 cm
Length (front)	76 cm	80 cm	85 cm	89 cm
Length (back)	116 cm	120 cm	125 cm	129 cm
Apron Waist (min)	58 cm	64 cm	75 cm	82 cm
Price	¥33,480	¥35,640	¥37,800	¥39,960





Florianne by milky ange

Outfit Design © 2019 Kijishiro Corp
Illustration © 2019 Sakura Shiho

How to order your new maid dresses

Please visit www.milky-ange.com or inquire at info@milky-ange.com to confirm product availability before ordering.

Customers that require delivery outside of Japan must order via e-mail with the following:

1. SKU
2. Color
3. Size
4. Quantity
5. First Name
6. Last Name
7. Street Address
8. Apartment/Building/Floor/Room/Suite #
9. City
10. Province/State/Territory
11. Country
12. Postal Code
13. Phone Number

Once an e-mail order is accepted, you will receive a PayPal payment request. Items are shipped Thursday thru Monday via Express Mail Service (EMS). You will receive your EMS tracking number within 48 hours from payment confirmation. Items are subject to taxes/duties while shipping through customs. Recipient is responsible for any customs duties. Signature will be required to receive your package.

Sizing table for all maid dresses

	Shoulder Width	Bust	Waist
S	35 cm	86 cm	66 cm
ML	37 cm	96 cm	78 cm
XL	42 cm	110 cm	95 cm
XXL	47 cm	125 cm	110 cm

This table contains the maximum body dimensions used when designing the outfits. Compare the dimensions against your own body measurements to select the most appropriate size. If your size is within 5 cm of the values shown in this table, you should select the next size up.

Returns due to improper fit are not allowed. To avoid purchasing an outfit that does not fit, please contact the store for sizing recommendations if you are not absolutely certain about your size.

Male / transgendered customers are encouraged to contact the store for sizing recommendations due to gender differences in body figure.



Rita by milky ange

Outfit Design © 2019 Kijishiro Corp
Illustration © 2019 Sakura Shiho

Afterword about this fanbook

Thank you so much for viewing my milky ange fanbook!

Outfits from milky ange has always fascinated me because of their cute design, high quality construction, and extreme attention to details. Cosplaying with such outfits boosted my confidence and made participating in shoots a tremendous fun for me. I kept hoping for an opportunity to highlight the brand's quality and spread the enjoyment I feel from cosplaying with their outfits. When I was editing the photos from my shoots, it just came to me that I can put together a catalog to showcase the brand I love and spread the enjoyment!

The name of this catalog, "le livre" or "the book", comes from a series of catalogs with the same name issued by a luxury department store known for its top-quality merchandise. I chose this name hoping to present the catalog and its contents as "top quality" material. Although the catalog is edited to look like an official catalog from milky ange, and the brand has granted me permission to freely distribute them, please note that this is just a fanbook made by an individual and NOT an official catalog from milky ange.

Every single outfit showcased in this catalog was made with care and attention to detail that clearly demonstrates how much the designer really cares about the brand and its outfits. I hope that this catalog was able to demonstrate the brand's commitment to quality and the fact that cosplaying with high quality outfits does make a difference.

Lastly, I would like to express my appreciation to...

Joana and Debra from the Wheeler Mansion, who generously gave me the permission twice to conduct a photoshoot throughout the building

Austin for being a wonderful photographer producing stunning photos and being very patient with me throughout the production process

Amy for giving me a perfect makeup and hairstyling as well as providing assistance throughout the shoot,

Marlo for being a fantastic photographer who always encouraged me, brought out my smiles, and captured the best moments

... and my sincere gratitude to milky ange for producing amazing maid dresses that gave me the opportunity to cosplay with confidence, meet with other amazing cosplayers, and work with professional photography and makeup artists who have generously helped me with the shoots!

Yuki Ayase
Head House Parlour Maid



milky ange® has granted the author permission to use its name and photos of its outfits within this book out of good will. This book is an independent creation by the author and is published without any direction or compensation from milky ange®. The author is not affiliated with milky ange® in any way other than the fact that he is a big fan of the brand's outfits. For any questions regarding this book, please contact the author at lelivre@yukiayase.com. Photography copyright by A. O'Brien Photography. milky ange® is a registered trademark of Kijishiro Corp. Character illustration copyright by Shiho Sakura. Clipart illustration copyright by Freepik. Great Vibes font copyright by Rob Leuschke. All other book content copyright by Yuki Ayase.



Author & Model by
Yuki Ayase
yukiayase.com

Photographs by
A. O'Brien Photography
aobrienphotography.com

Photographs by
Marlo Loudon Photography
marlolouden.com

Makeup & Hair Styling by
Amy Banas
amybanas.com

Illustrations by
Shiho Sakura
@shihoncake_

Location Courtesy of
The Wheeler Mansion
wheelermansion.com

Chicago Botanic Garden
chicagobotanic.org

Donald E. Stephens Convention Ctr
rosemont.com/desconvention

Hyatt Regency O'Hare Hotel
hyatt.com

Visual Image Photography Studio
vipis.com

Font Courtesy of
Rob Leuschke (*Great Vibes*)
typesetit.com

Clipart Courtesy of
Freepik
freepik.com

Milky Ange Unofficial Fanbook
"Le Livre" Volume 1
EN-US-WEB Edition

Copyright © 2020 Yuki Ayase
yukiayase.com/lelivre

Printed by Blurb, Inc
580 California Street, Suite 300
San Francisco, CA 94104
blurb.com

2nd Edition (2020-03-03)

This is an **UNOFFICIAL** fanbook made by an author not affiliated with milky ange. For inquiries regarding this book, please contact the author.



Kirsten by milky ange

Outfit Design © 2019 Kijishiro Corp
Character Illustration © 2019 Shiho Sakura



Milky Ange Unofficial Fanbook "Le Livre" Volume 1

EN-US-WEB Edition

Copyright © 2020 Yuki Ayase

yukiayase.com/lelivre

2nd Edition (2020-03-03)

This is an unofficial fanbook made by an author not affiliated with milky ange.
For inquiries regarding this book, please contact the author.